



Simple. Fast. Precise.
Empowering Anesthesiology.
The new LOGIQ™ *e* Ultrasound System



Challenges in Anesthesiology

A fast and accurate regional block requires seeing the nerve fast and then accurate needle guidance. That's what anesthesiologists told GE scientists. Even more, they asked for help to see the needle tip, perform procedures quickly, and be confident that the injection was administered in the correct location... even in obese patients.

Designed for Anesthesiology

See clearly. See quickly. Guide precisely. Those were the values that users requested that drove the creation of the new LOGIQ *e*. Its imaging engine comes from GE's flagship console systems, delivering crisp images in a compact package. Innovative anesthesia-specific software and transducers help you see the needle and administer a block... even in a brightly lit room.



New button probe

Simple

The LOGIQ *e* gives you many advanced features and the right-out-of-the-box imaging – optimized for anesthesia helps make the technology transparent so that you can focus on the patient.

- **Set up for you.** Head to toe, every block is different. The LOGIQ *e*'s presets helps simplify the selection of the right system settings for each application.
- **Workhorse simplicity:** The versatility of probes like the 12L mean you can use a single probe for many applications.
- **Simple documentation.** One click sends images to multiple storage locations.

Fast

Whether you're measuring seconds for clinical reasons, or you're measuring productivity for business reasons, the LOGIQ *e* is built to help make you fast. The compact system quickly moves from patient to patient.

- **Need a third hand?** With a needle in one hand, a probe in the other, sometimes you need another person to adjust the image. With system controls on the probe, you may not need the extra hand.
- **Imaging on the go.** Compact and battery-operated, the LOGIQ *e* takes the hassle out of moving from patient to patient.

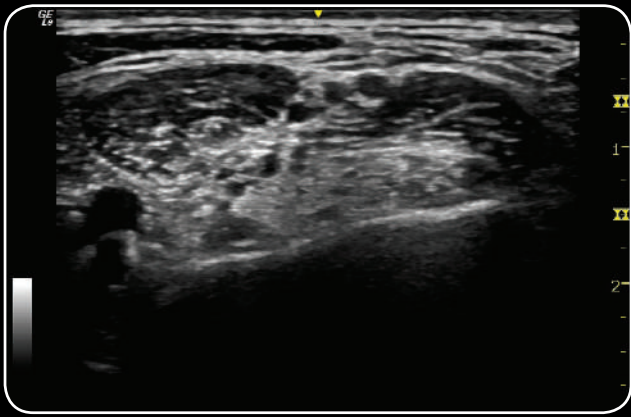
Precise

Getting the needle in the right place the first time on all patient types is key to patient comfort. Crisp imaging is at the core of the LOGIQ *e*.

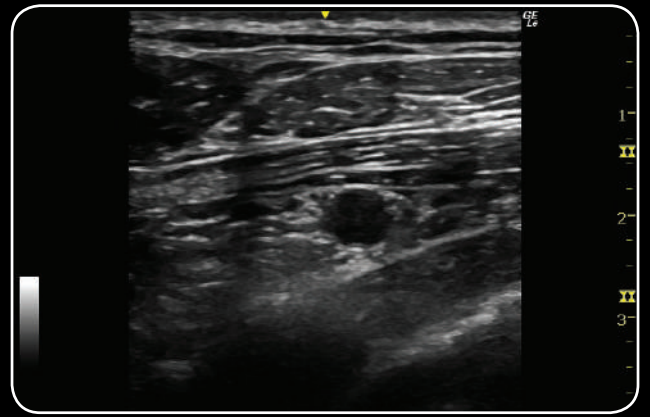
- **See the needle tip.** The LOGIQ *e* uses two different types of ultrasound: One for tissue and one for metal. This makes the needle stand out and allows separate control of its appearance.
- **See the nerve.** Tissue differentiation matters. The LOGIQ *e*'s imaging engine is optimized to help make the nerve stand out.



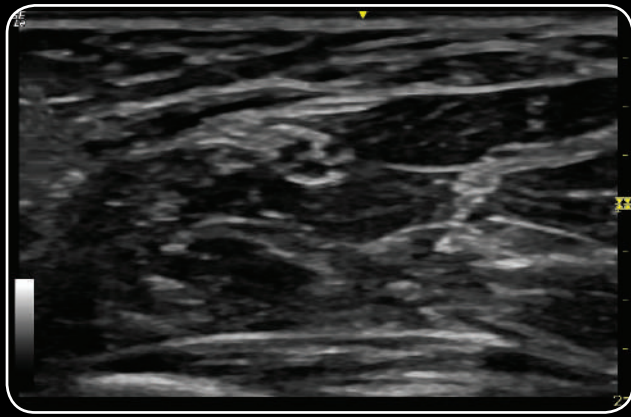
LOGIQ *e*



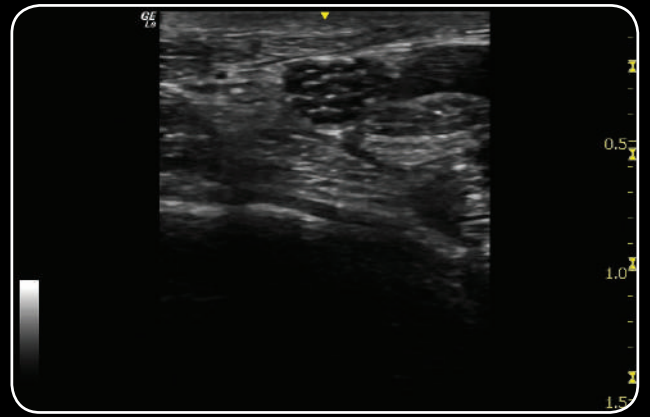
Brachial Plexus Nerve at the Interscalene level is clearly delineated between the Scalene muscles while utilizing the 12L



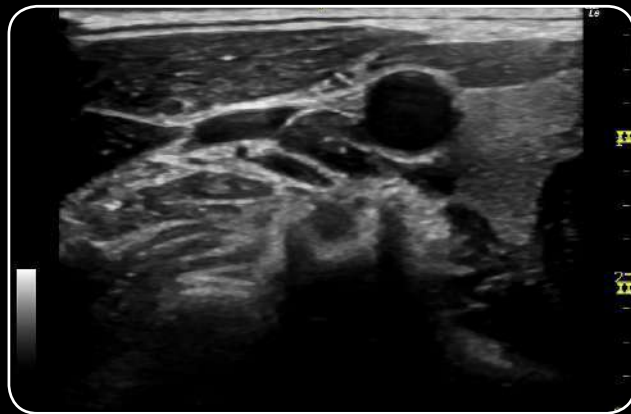
Infraclavicular Brachial Plexus Nerve is well seen surrounding the Axillary Artery between the two fascial planes imaged on the L4-12t



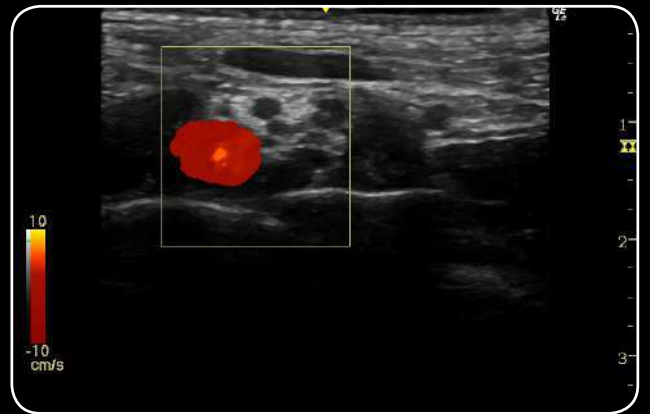
Clarity of the median nerve sheath shows excellent spatial resolution delivered by the L4-12t



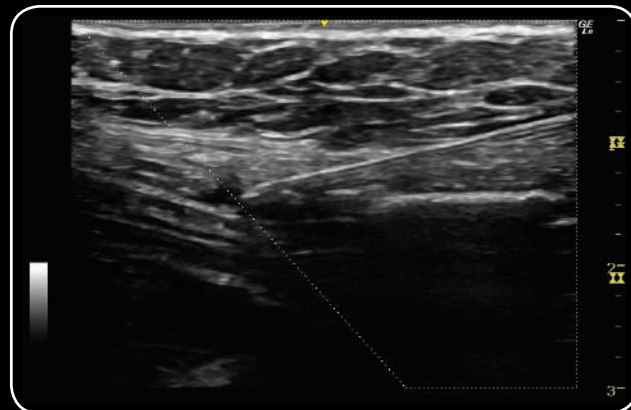
See the individual fascial of the nerve bundles at 22MHz imaging on the L10-22



Excellent definition of cystic clarity of the Carotid Artery aids the ability to demonstrate the Phrenic Nerve imaged on the L4-12t



The Supraclavicular Brachial Plexus Nerve bundle is easily confirmed while applying Power Doppler utilizing the L4-12t



Needle and needle tip are clearly demonstrated approaching the Transverse Abdominus muscle for TAP block procedure



Portable Docking Cart



Wide Range of Probes



德康醫療
MedOne Medical

- ☎ 德康醫療器材事業有限公司
- ✉ service@theone.com.tw
- ☎ 02-2258-2288
- 📍 220新北市板橋區合宜路199號1樓

General Electric Company reserves the right to make changes in specifications and features shown herein, or discontinue the product described at any time without notice or obligation. Contact your GE Representative for the most current information.

©2014 General Electric Company — All rights reserved.

Not all features or specifications described in this document may be available in all probes and/or modes.

GE Medical Systems Ultrasound & Primary Care Diagnostics, LLC, a General Electric Company, doing business as GE Healthcare.

All probes names include the -RS in the name to identify the connector.

GE, GE Monogram and LOGIQ are trademarks of General Electric Company or one of its subsidiaries.

GE Healthcare, a division of General Electric Company.

GE Healthcare

